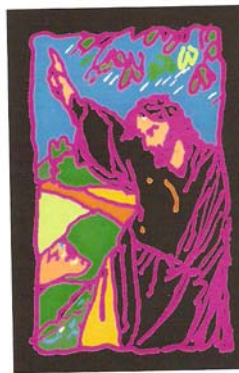


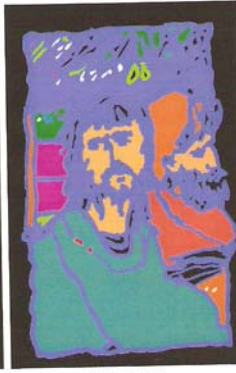
# STATIONS OF THE CROSS

During Lent or anytime you desire to make the Stations of the Cross you may want to follow this way.

The Stations were first introduced by Pope John Paul II on Good Friday 1991 as he walked the Way of Cross at the Coliseum in Rome.



IN THE GARDEN  
Matt 26:36-41



BETRAYED  
Mark 14:43-46



CONDEMNED  
Luke 22:66-71



DENIED  
Matt 26:69-75



JUDGED  
Mark 15:1-5,15



SCOURGED+CROWNED  
John 19:1-3



BEARS HIS CROSS +  
John 19:6,15-17



SIMON HELPS JESUS  
Mark 15:21



MEETS WOMEN  
Luke 23:27-31



CRUCIFIED  
Luke 23:33-34



PROMISE TO THIEF  
Luke 23:39-43



MEETS HIS MOTHER  
John 19:25-27



+JESUS DIES +  
Luke 23:44-46



THE TOMB  
Matt 27:57-60

**“IT IS FINISHED”**

These 14 STATIONS are based on those celebrated by Pope John Paul II on Good Friday 1991.

Drawings © 2004-7  
Deacon Frank J. O'Connell  
[www.atwe.org](http://www.atwe.org)